



Ultimate Events

Exceeding Expectations!

Catalog C

Index

Bars.....	12	Linens / Napkins.....	4
Beverage dispensers.....	8	Lounge Furniture.....	3
Bleachers.....	14	Mirrors	10
Cake stands.....	10	Neon.....	16
Candelabras	11	Outdoor cooking equipment	9
Candle holders.....	11	Ovens	9
Carpet & flooring	13	Pig roaster	9-10
Chafing dishes	8	Pipe & drape	12
Chairs & bar stools	3	Plate covers	7
Chair covers.....	4	Podiums.....	13
Charger plates	7	Power options.....	15
Climate Control	15	Punch bowls.....	9
China & glass plates	6-7	Raffle barrels	12
Coffee service	8	Refrigerators / Freezers	9
Concession equipment	9	Serving bowls.....	10
Conference equipment	12	Serving platters	7
Coolers	8	Serving utensils.....	10
Dance floors.....	13	Mobile staging units	13
Décor and fabric draping.....	12	Mirrors	10
Event making.....	12	Skirting.....	4
Farm Tables and chairs	3	Sound systems	13
Flatware	5-6	Staging and flooring	13
Floral stands	11	Tables.....	3
Food preparation & service.....	9	Tabletop accessories.....	10
Games.....	16	Table décor	11
Glassware	5	Trays	7-8
Grills.....	9	Tents and Calopies	14
Heaters and climate control.....	15	Vases	11
Lighting.....	16	Wedding accessories	11-12

Ultimate Events is the premier tent and event specialist company, providing professional service for events in the Twin Cities and upper midwest for over 50 years. Our expertise in superior tent products and event décor allows us to offer our clients top of the line service with a personal touch. Our impressive linen, dishware, and tabletop inventory help us to provide complete tent and party rental. We are a growing company and are always looking for new, innovative ways to accommodate your event needs. Our inventory is constantly expanding and our high standard of excellent service remains our number one priority. We welcome you to visit our new showroom at 13405 15th Ave N in Plymouth to discuss your event and rental needs. Also, please browse our website, www.ue-mn.com, to view our recent event photos, new product lines, and even place a quick order online. Our event specialists are always ready to start the process to make your event an "Ultimate Event". ***Your Complete Party and Tent Rental Company!**

-We thank you for choosing Ultimate Events and appreciate the opportunity to work with you.

ORDERING INFORMATION

Rental Period and Pricing *Prices are subject to change without notice

The rental rate on most equipment is for 1 to 3 days, orders for weekend events may be picked up on Friday and returned on Monday. Rates for periods longer than 3 days are available by quote. Charges are based on time out, whether the items are used or not.

Delivery and Set up

We deliver anywhere, charges vary based on the distance from our store. Standard delivery and pickup includes drop off at dock or curb during our regular business hours, additional charges apply for deliveries and pickups before 8am or after 5pm or on weekends. Items must be placed in the same location as delivered and stacked or repacked in the original delivery containers for pickup. Set up and take down of rentals is not included in our standard rental or delivery fee, that service is available at an additional cost if arranged at the time of your reservation.

Cleaning

Items must be returned clean and in their proper containers, staples and tape need to be removed. Cleaning charges will be assessed at a rate of \$30/hour, see below for dish and linen exceptions.

Dishware

All of our china, glassware, and flatware comes sterilized, plastic wrapped, and "table ready" for your immediate use. Please return items "food free" (scraped/rinsed—a thorough washing is not necessary) and in their original packing containers.

Linens

Shake out but don't wash table linens. Please remember you are responsible for damage to linens caused by mildew, burns, or tears. We will provide a bag for used linens so do not store damp linens in plastic bags as that causes mildew. Please return all skirting on the hangers provided. Skirting clips/pins need to be returned as well.

Damage Waiver

A nonrefundable 8% damage waiver is added to all contracts which covers accidental breakage due to normal use. This is not insurance and does not cover loss, theft or abuse and damaged items must be returned to Ultimate Events. If items are lost or stolen, the customer will be charged the current replacement cost.

Deposits

All rentals require a 50% deposit to reserve. Deposits are refundable up until 90 days prior to delivery date. All items scheduled for delivery must be paid in full at least seven days in advance of the rental.

TABLES

Banquet - plywood top	
4' x 30"..... seats 4-6.....	9.45
6' x 30"..... seats 6-8.....	9.70
8' x 30"..... seats 8-10.....	10.00
Banquet - formica top	
6' x 30"..... seats 6-8.....	14.70
8' x 30"..... seats 8-10.....	15.75
Round - plywood top	
36" round seats 4.....	10.00
48" round seats 6.....	10.50
60" round seats 8-10.....	10.75
72" round seats 10-12.....	13.65
Pedestal style cocktail table	
•Available in 24", 30", or 36" rounds.	
•30" or 42" height available	
All round styles of cocktail tables.....	11.05
•30" Square pedestal table.....	26.25
Height-adjustable chrome footrest....	3.15
Specialty tables	
Bamboo table..... 3'x3' square.....	21.00
6'x24" Faux marble bar table	
Adjustable height.....	26.25
6'x42" wide banquet.....	12.60
46"x96" oval..... seats 8-10.....	12.60
60"x60" square..... seats 8.....	12.60
Student / classroom table	
6' x 18" plywood.....	8.95
6' x 18" formica.....	14.70
8' x 18" formica.....	15.75
Serpentine..... each plywood section	12.60
Half round 30".....	10.50
60".....	12.60
Quarter round 30".....	10.50
Children's height: 48" round;	
5', 6', or 7' x 30" rectangle.....	12.60
Square card table.....seats 4.....	8.95
6' x 30" Chill Table.....	31.50
Picnic table.....	36.75
Umbrella table - white w/ white umbrella	
46", 48", or 60" round.....	36.75

CHAIRS & BAR STOOLS

Plastic/Metal Folding chairs	
Black seat with black frame.....	1.60
Black seat and frame w/ "comfort back"	2.05
White seat and frame w/"comfort back"	3.15
White seat with chrome frame.....	2.65
Festival chair.....	1.40
Wooden folding chair with padded seat	
White Classic folding chair.....	3.95

White or black.....	4.75
Natural.....	4.20
Mahogany (indoor use only).....	4.20
Bamboo folding rattan chair	5.25
Stacking chairs	
White or Black plastic "bistro" style.....	2.65
Plum or Gray upholstered chair.....	4.45
Children's seating	
stack chair (plastic).....	1.60
•Assorted colors- blue, green, yellow, red and brown	
Booster chair.....	6.30
Youth high chair.....	15.75
Ballroom chair with cushion (Chiavari)	
Wooden, available in black, gold,	
mahogany, silver, or white.....	8.35
Acrylic "ice".....	9.40
•Cushion colors: black, silver, gold, ivory, or white	
Bar stool	
Black padded "X" back.....	15.75
Wood saddle seat - no back.....	15.75
Bamboo bar stool.....	12.60
Black legs and cushion	
with or without backrest.....	12.60
Chrome legs with round black seat.....	8.40
Black plastic seat w/ back and gray frame	10.50
Director's chair	10.50

FARM TABLES & CHAIRS

Rustic wood table (92"x39") 8' x 3'3"	
30" tall.....	52.50
42" tall.....	55.15
Rustic wood chair with cushion.....	10.50
Rustic wood bench.....	36.75

LOUNGE FURNITURE

Add comfort and style to any event with these lounge pieces. Custom furniture adds a special look to your space.

Serpentine 3 piece black leather 6' rnd	630.00
Resin, wicker lounge furniture	
Sofa with cushion.....	262.50
Arm chair with cushion.....	105.00
Ottoman with cushion.....	68.25
Sofa table.....	42.00
Lounge tables and benches (variety)	78.75
Drum style table 2' or 4' diameter. Call for pricing. (Available in black, white, or custom colors)	
Arm chair -(white or black cover).....	78.75
Serpentine bench w/back (2-6' sections)	393.75
8' Banquette black serpentine w/back	210.00

Most lounge furniture is modular

LINENS

Our inventory of linens includes over 50 solid colors in polyester and a variety of specialty fabrics. We are constantly adding new linens to our growing collection. Call an Ultimate Events specialist today, and we'll be glad to answer any linen questions!

For rectangular tables

60" x 120" banquet cloth

- Fits 6' or 8' tables

Polyester.....	10.45
Imperial Stripe	13.15
Spun	15.75
Damask.....starting at	18.90
Specialty fabrics	21.00

90" x 156" conference cloth

- Drapes 6' or 8' table to the floor

Polyester.....	26.25
Imperial Stripe	29.40
Spun.....	31.50
Damask	33.60
Specialty fabrics.....starting at	36.75

60" - 90" square cloth

- Fits 4' table or 36" x 36" table

- Can be used as an overlay for most tables

Polyester (60").....	8.95
Imperial Stripe (70" - 90")	16.80
Spun (60")	12.60
Damask (80" - 90").....	18.90
Specialty (80" - 90")	21.00
Sheer (80" - 90")	26.25

For round tables

90" round cloth

- Fits 24" to 60" tables

Polyester	10.45
Imperial Stripe	13.15
Spun	15.75
Damask.....starting at	18.90
Specialty fabrics	21.00

108" round cloth

- Drapes 48" table to the floor

Polyester.....	14.70
Spun	18.90

120" round cloth

- Fits 72" table, drapes 60" table to floor
- Drapes 42" high cocktail table to the floor

Polyester.....	15.70
Imperial Stripe	18.90
Spun	21.00
Sheer	26.25
Damask.....starting at	26.25
Specialty fabrics	31.50

132" round cloth

- Drapes 72" table to the floor
 - Drapes 42" high cocktail table to the floor w/sash
- | | |
|------------------------------|-------|
| Polyester | 20.50 |
| Imperial Stripe | 23.65 |
| Spun | 26.25 |
| Damask.....starting at | 31.50 |
| Specialty fabrics | 36.75 |

TABLE PADS

36" x 102"	fits 6' or 8' table	6.30
72" x 72" square	fits 60" sq or 72" rnd....	6.30
66" round.....	fits 36" - 60" table	6.30

CHAIR COVERS

Fitted style (for round back chairs)	3.15
• White, ivory, and black available	
Bag style (fits almost any chair)	
White polyester	4.20
Ivory satin	6.30
Sashes	7"x105" starting at..... 1.50
• Many fabrics available	

LINENS FOR SPECIALTY TABLES

Serpentine top	white or ivory.....	10.50
Umbrella table cloth —a variety of colors available		
90"		12.60
108"		15.75

NAPKINS

Solid colored, polyester napkins —20"x20"85
Spun napkins —20"x20"	1.00
Specialty napkins —20"x20"	1.05-2.65
Cocktail napkins —10"x10"90

TABLE SKIRTING

* Top cloth not included

9' length	15.75
14' length	21.00
21' length	31.50
• White • Ivory • Royal Blue • Burgundy • Purple	
• Black • Hunter Green • Peach • Red • Yellow	

GLASSWARE**Stemware**

Wine goblet.....	6 oz.....	.70
Wine balloon.....	7 oz.....	.70
Wine goblet.....	10 oz.....	.70
Water goblet.....	11 oz.....	.70
Wine goblet.....	11 oz.....	.70
Wine goblet.....	13 oz.....	.70
Champagne flute.....	6 oz.....	.70
Champagne flat.....	6.5 oz.....	.70

Stemless Glassware

Red wine.....	16 oz.....	.75
White wine.....	17 oz.....	.75
Martini.....	13 oz.....	.75
Champagne flute.....	8.5 oz.....	.75

Signature Stemware—elegant and refined

Wine goblet.....	6.5 oz.....	.85
Wine goblet.....	8.5 oz.....	.85
Wine/water goblet.....	12 oz.....	.85
Wine balloon.....	13 oz.....	.85
Bordeaux goblet.....	16 oz.....	.85
Champagne flute.....	5.75 oz.....	.85

Barware

Iced Tea glass.....	16 oz.....	.70
Beer mug.....	12 oz.....	.70
Pint glass.....	16 oz.....	.70
Frosted "Tom Collins".....	12oz.....	.70
Footed pilsner.....	10 oz.....	.70
Flared pilsner.....	12oz.....	.70
Brandy snifter.....	12 oz.....	.70
	24 oz.....	1.30
	32 oz.....	1.30
High ball.....	9 oz.....	.70
	13 oz.....	.70
Low ball.....	7 oz.....	.70
	12 oz.....	.70
	14 oz.....	.70
Margarita.....	16 oz.....	.80
Martini.....	6 oz.....	.80
Sherry.....	2 oz.....	.70
Shot glass.....	1.5 oz.....	.70
	2 oz.....	.70
Shooter glass.....	2 oz.....	.70
Footed rocks.....	4.5 or 5.5 oz.....	.70
Coffee mug (clear).....	10 oz.....	.70
Irish coffee mug (footed).....	8 oz.....	.70
Punch cup.....	5 oz.....	.70
Sherbet.....	5 oz.....	.70

FLATWARE*(Rented in increments of five.)***Baguette (stainless)—modern mirror finish**

Dinner knife.....	.45
Dinner fork.....	.45
Salad/dessert fork.....	.45
Teaspoon.....	.45
Tablespoon.....	.45
Bouillon spoon.....	.45
Iced tea spoon.....	.45
Table fork.....	.45

Avalon (stainless)—rounded elegance

Dinner knife.....	.45
Dinner fork.....	.45
Salad/dessert fork.....	.45
Teaspoon.....	.45
Bouillon spoon.....	.45
Butter spreader.....	.45
Table spoon.....	.45
Table fork.....	.45

New Charm (stainless)—contemporary design

Dinner knife.....	.50
Dinner fork.....	.50
Salad/dessert fork.....	.50
Teaspoon.....	.50
Bouillon spoon.....	.50
Cocktail fork.....	.50
Butter spreader.....	.50

Apollo (stainless)—modern/art deco with wide lines

Dinner knife.....	.50
Dinner fork.....	.50
Salad/dessert fork.....	.50
Teaspoon.....	.50
Bouillon spoon.....	.50
Butter spreader.....	.50

Minuet (stainless)—tasteful fluted lines

Dinner knife.....	.50
Dinner fork.....	.50
Salad/dessert fork.....	.50
Teaspoon.....	.50
Bouillon spoon.....	.50
Butter spreader.....	.50

Oneida Shell (stainless)—adorned by a small shell

Dinner knife.....	.55
Dinner fork.....	.55
Salad/dessert fork.....	.55
Teaspoon.....	.55
Table spoon.....	.55
Butter spreader.....	.55

Contour (stainless)—simple elegance

Dinner knife.....	.55
Dinner fork.....	.55
Salad/dessert fork.....	.55
Teaspoon.....	.55
Table spoon.....	.55
Butter spreader.....	.55

Continued...

International Falmouth (silver)—stately grandeur

Dinner knife.....	.70
Dinner fork.....	.70
Salad/dessert fork.....	.70
Teaspoon.....	.70
Bouillon spoon.....	.70
Butter spreader.....	.70

Oneida Shell (silver)—adorned by a small shell

Dinner knife.....	.70
Dinner fork.....	.70
Salad/dessert fork.....	.70
Teaspoon.....	.70
Table spoon.....	.70
Butter spreader.....	.70

Steak knife all purpose..... .70**CHINA** (Rented in increments of five.)**Euro White—white china with a wide rim**

Chop plate, 12".....	1.30
Dinner plate, 11".....	.60
Luncheon plate, 9.5".....	.60
Salad/dessert plate, 8".....	.60
Bread & butter plate, 6.5".....	.60
Coffee cup, can style.....	.60
Saucer.....	.60
Rimmed soup bowl, 9".....	.60
Bouillon cup (without handles).....	.60

Nottingham- classic ivory with wide rim

Dinner plate, 10".....	.60
Luncheon plate, 9".....	.60
Salad plate, 8".....	.60
Bread & butter plate, 6".....	.60
Coffee cup.....	.60
Saucer.....	.60
Bouillon cup without handles.....	.60

Castle White—all white, clean contemporary style

Dinner plate, 10".....	.60
Salad/dessert plate, 7.5".....	.60
Bread & butter plate, 6".....	.60
Coffee cup.....	.60
Saucer.....	.60
Snack plate, 9" with cup.....	.95
Soup cup.....	.60
Soup liner.....	.60
Coffee mug.....	.60
Demitasse cup.....	.60
Platter, 16" oval.....	5.25

Squares—white square and triangle shaped china

Hors d'oeuvres plate, 2.75".....	.65
Square dinner plate, 10".....	.65
Square salad/dessert plate, 7.5".....	.65
Triangle plate, 10".....	.65
Square platter, 15.5".....	6.30

Diplomat—classic ivory with gold band

Dinner plate, 10".....	.55
Salad/dessert plate, 7".....	.55
Bread & butter plate, 6".....	.55
Coffee cup.....	.55
Saucer.....	.55
Snack plate, 9" with cup.....	.95
Soup bowl 8".....	.55
Demitasse cup & saucer (\$.55 each).....	1.10
Serving Bowl, 8".....	4.75
Salt and pepper set.....	3.70
Cream & sugar set.....	4.75
Gravy boat.....	4.75

Regina—pure white with elegant swirled band

Dinner plate, 10.5".....	.60
Salad/dessert plate, 7.5".....	.60
Bread & butter plate, 6.75".....	.60
Coffee cup.....	.60
Saucer.....	.60
Bouillon cup with handles.....	.60
Platter, oval 15".....	6.30
Serving bowl, 9" or 10".....	5.25
Cream & sugar set.....	4.75

Emperor—classic white with silver band

Dinner plate, 10.5".....	.65
Salad/dessert plate, 8".....	.65
Bread & butter plate, 6".....	.65
Coffee cup.....	.65
Saucer.....	.65
Rimmed soup bowl, 8.5".....	.65

Westchester—formal black & bone with gold band

Dinner plate, 10".....	.65
Salad/dessert plate, 8".....	.65
Bread & butter plate, 6".....	.65
Coffee cup.....	.65
Saucer.....	.65

Milan—white with a wide decorative gold band

Dinner plate, 10.5".....	.65
Salad/dessert plate, 7.75".....	.65
Bread & butter plate, 6.5".....	.65
Coffee cup.....	.65
Saucer.....	.65
Bouillon cup with handles.....	.65

Riviera—off-white with delicate vine & floral band

Dinner plate, 10".....	.65
Salad/dessert plate, 8".....	.65
Bread & butter plate, 6".....	.65
Coffee cup.....	.65
Saucer.....	.65

Continued...

Vienna—white with a floral design

Dinner plate, 10.75"65
Salad/dessert plate, 7.75"65
Bread & butter plate, 6.75"65
Coffee cup65
Saucer65
Rimmed soup bowl, 9"65

Fiestaware—six colors, mix and match: rose, periwinkle, sea mist, turquoise, yellow, and cobalt

Dinner plate, 10.5"65
Bread/salad/dessert plate, 7.25"65
Coffee cup65
Saucer65
Soup bowl, 7"65
Salt and pepper set	3.70
Cream & sugar set (with tray)	4.75
Tea pot	3.70

Monique Couturier/Etoile- exclusive high end pattern

Dinner Plate, 10.75"	1.00
Salad Plate, 8"	1.00
Charger Plate 12"	3.15
Bread Plate	1.00
Rimmed Bowl 9"	1.00
Coffee Mug	1.60
Coffee Cup	1.00
Saucer	1.00

Paradise—lovely white china with a gold band

Dinner plate, 10"65
Salad/dessert plate, 7.5"65
Bread & butter plate, 6.5"65
Rimmed soup bowl, 9"65
Coffee cup65
Saucer65

Tempered Glass—textured glass pattern

Charger, 12" square	1.05
Dinner Plate, 9.75" square65
Dinner Plate, 10"x6" rectangular65
Salad Plate, 8" square65
Bread & butter plate, 6" square65
Platter, 14" square	2.65
Tray, 12"x8" rectangular	2.65
Bowl, 13"x10.5" rectangular	2.65

Frosted glass—clear glass with frosted, swirled band

Dinner plate, 9.75"55
Salad plate, 9" deep dish55
Salad/dessert plate, 7.75"55
Coffee cup55
Saucer55
Serving Bowl, 10.5"	3.40
Service plate, 12.5" round deep dish	3.40

Clear glass

9", 8", or 6" plate55
Coffee mug70

PLATE STANDS

Black wrought Iron - 3 tiered with clear glass..	18.90
Simple 3- tier - 21" hieght (Silver or gold)	10.50
•For use with any plate from 9" to 10.5" in diameter (please specify)	
Rustic 3-tiered.....33" height	26.25
•Gold wood baskets included	

SPECIALTY PLATES

Cater plate—features a notch for your wine glass	
Round, 8"65
Red Halo—white with a red rim & gold edging	
Salad/dessert plate, 7.5"65
Red Square—sheen metallic finish	
Salad/dessert plate, 8"65

PLATE COVERS

Cover for 10" - 10.5" plate (white)	1.05
Cover for 9.75" - 10" plates (amber)	1.05
Cover for 10.75" (clear)	1.05

CHARGERS

Acrylic 12" Charger (Silver or Gold)	2.10
Acrylic 12" wood grain finish	2.10
Monique Couturier/Etoile	3.15
Glass 12" w/ silver rim	3.65

SERVING PLATTERS

White ceramic oval 16", 18"	6.30
White Swirl oval 15"	6.30
Diplomat oval	6.30
White square 15.5"	6.30

SERVING TRAYS

Silver		
Round	12"	8.40
	15"	8.40
Rectangular.....	23"x18"	12.60
	24"x18" with handles ..	12.60
Stainless steel —high polish "hammered" style		
Round	20"	10.50
Oval.....	15"x20"	10.50

Continued...

Rectangular..... 12"x17"	10.50
Square..... 18"x18"	10.50
Bowl..... 14"x14".....	8.40

Other trays of assorted sizes are available!

Glass

Round..... 13".....	10.50
23".....	10.50

Waiter trays - non-skid surface

Round..... 14".....	4.75
Oval..... 22" x 27"	7.35
Waiter's tray stand.....	7.35

Lap trays

Gray..... 12" x 16"80
Beige..... 12" x 16"80
Dark brown..... 14" x 18"80

**Prices are subject to change without notice*

CHAFING DISHES**Roll-top high polish stainless steel with brass trim (2 styles available)**

Rectangular.....8 quart	57.75
Round.....6 quart.....	47.25
"Drop-in" Soup station (for 8qt only).....	21.00

Silver

Rectangular..... 8 quart fits full-sized food pans only	47.25
Round..... 3 quart	29.40
8 quart	47.25

Stainless steel

Rectangular..... 8 quart Standard	25.20
Ornate.....	27.30
Brass trim	31.50
Brass trim, electric	39.90
Rectangular..... 4 quart, 2.5" half pan..	18.90
Oval..... 6 quart, brass trim	24.15
Round..... 3 quart (glass lid)	21.00
4 quart	21.00
5 quart ornate	21.00

Extra food pans

Full size..... 2.5" or 4" deep	3.15
Half size..... 2.5" or 4" deep	2.10

'Canned heat' (Sternos)

8 oz, burns approx. 2 hourssale item..	3.15
--	------

COFFEE SERVICE**Water boiler, 110v***

100 cup	37.80
---------------	-------

Coffee makers, 110v*

55 cup..... high polish	29.40
100 cup..... high polish	37.80

** Requires dedicated circuit*

Coffee urns - with canned heat

50 cup silver	50.40
60 or 77 cup "New York" high polish stainless steel with gold trim.....	44.10

Service pieces

Coffee pourer..... thermo, white swirl.....	4.20
thermo, black	4.20
silver	12.60
brushed stainless.....	7.35
Tray, creamer, and sugar set (silver).....	14.70
Creamer..... glass	2.10
silver	3.70
Sugar..... glass	2.10
silver	3.70

BEVERAGE DISPENSERS**Water boiler, 110v**

100 cup	37.80
---------------	-------

Insulated beverage servers

Cold beverages.....5 gallon.....	14.70
10 gallon.....	18.90
Hot beverages.....5 gallon.....	21.00
10 gallon.....	26.25
Hot beverages, deluxe black cambro 3 gallon.....	21.00
5 gallon.....	26.25
"Coffee" or "Decaf" placard	3.15
Slip cover for 5 gallon hot server.....	5.50

Acrylic beverage server, 3 gallon

7.5 quart.....	29.40
----------------	-------

Insulated beverage coolers

Keg cooler.....8 or 16 gallon	21.00
Chest cooler.....100 quart.....	25.20

Beverage cooling tubs

Hammered Stainless Steel - 4 gallon	18.90
Galvanized steel tub - 10 gallon	15.75
Stainless steel double wall - 10 gallon	23.10
Plastic tub	7.35
Stock tank.....96 gallon.....	36.75
•Galvanized steel or black fiberglass	

Punch fountain (5 gallon) stainless	57.75
--	--------------

PUNCH BOWLS

Silver	
3 gallon ornate pedestal	31.50
Add a matching 22" round silver tray....	11.55
Stainless steel — High polish hammered style	
3 gallon	16.80
Wine divider.....	3.15
Ladles	
Acrylic.....	1.60
Silver.....	5.25
High polish stainless steel.....	3.15
Punch cup 5 oz clear glass65

FOOD PREPARATION & SERVICE

Warming oven/Hot Box 110v	147.00	
Holds 24 hotel pans or 12 sheet pans		
Sheet pans.....	3.15	
Food pan transporter - Cambro		
Holds three 4" pans or five 2.5" pans.....	29.40	
Holds three full size sheet pans.....	29.40	
Electric roaster 8 quart	23.10	
Sauce warmer	3 quart, with ladle	25.20
Carving station	47.25	
(drip pan, board, & heat lamp)		
Heat lamp		
(infra-red light, 2.5" deep pan, & slotted pan)	26.25	
Butane burner, for tabletop (1 can of fuel inc.)	21.00	
Extra butane canister	5.25	
Grididdle, for tabletop ...18" x 24"(1 can inc.) ...	28.35	
Extra propane cylinder	5.25	
*Commercial refrigerator (23 cubic feet)	115.50	
*Commercial freezer (23 cubic feet)	115.50	
Waiter trays - non-skid surface		
Round..... 14"	4.75	
Oval..... 22" x 27"	7.35	
Waiter's tray stand.....	7.35	
Bus pan	3.15	
Salad / Beverage Chiller 23" x 44" tabletop ...	18.90	
6' Chiller Table	31.50	
Stock pots		
6 gallon	9.45	
10 gallon	10.50	
15 gallon	18.90	
20 gallon	21.00	
with steam basket	26.25	

Most items in our inventory have a 1-3 day rental period. Items marked with an * are rented for a 24-hour period.

Propane tanks are available in 20, 40, and 100lb Sizes—see your event specialist for current market price.

CONCESSION EQUIPMENT

*Chocolate Shot Machine	63.00	
Chocolate sipping mix	19.90	
*Popcorn machine with Old Fashioned Wagon	99.75	
*Popcorn machine (tabletop)	63.00	
Popcorn packet-8 servings... <i>sale item</i>	2.65	
Disposable popcorn bags <i>sale item</i>15	
*Hot dog roller	47.25	
•Holds 45 hot dogs		
*Hot dog steamer	42.00	
•Holds 120 hot dogs, attached bun warmer		
Paper hot dog tray, 8"	<i>sale item</i>15
*Snow cone machine	63.00	
Syrup 1gal- makes about 125 cones	12.55	
Syrup pump	<i>sale item</i>	5.20
Snow cone cups 100ct.....	<i>sale item</i>	4.50
*Cotton candy machine	63.00	
Candy floss- makes about 70 servings	10.00	
Paper cones 100ct.....	4.50	
Plastic bags 100ct.....	9.40	

OUTDOOR COOKING EQUIPMENT

Charcoal grill 2' x 5'	63.00
*Propane grill	
24" x 30" without propane.....	47.25
2' x 5' without propane.....	110.25
*Propane grill accessories	
Two compartment steam table.....	21.00
Grill hood	
For 24" x 30" grill	21.00
For 2' x 5' grill	31.50
•40 lb propane tank.....	please call
Convection oven	157.50
•40 lb propane tank.....	please call
*Propane burner portable stove	47.25
Double burner	57.75
•20 lb propane tank included	
*Pig roaster (charcoal) trailer towed (2" ball) ..	89.25
•Features hand crank for turning pig	

Continued..

- *Pig roaster** (propane)
 3' x 6' trailer towed (2" ball) 115.50
 •40 lb propane tank lasts up to 8 hours(not included)
 •Holds up to 150 lb pig, must fit in 3'x6' grill area
 •No turning required, roasts in convection heat
- *Deep fryer** (propane), floor model for outdoors
 •3.5 gallon oil capacity 94.50
 •40 lb propane tank..... please call
- Propane costs subject to change based on market.

SERVING UTENSILS

Silver

- Serving fork or spoon
 long or short handled..... 3.70
- Tongs
 ice 8" 3.70
 salad scissors (fork/spoon) 3.70
 pastry scissors (fork/spatula) 3.70
 bread scissors (curved ends)..... 3.70
- Ladles punch 5.25
 sauce, short handled.. 3.15
- Cake service (knife & server)..... 8.40

Stainless steel

- Serving fork
 long or short handle 3.15
- Serving spoon
 long or short handle 3.15
- Tongs long spring 15" 2.65
 spring 8" 2.65
 spring 12" 2.65
 short 6.5" 2.65
 sugar 5" 2.65
- Ladles 1 oz short handled..... 2.10
 6 oz long handled 3.15
 sauce, short handled.. 2.10
 punch ladle..... 3.15
- Ice cream scoop 1.60
- Pie server 1.85
- Lobster cracker90
- Ice scoop 1.60

Acrylic

- Punch ladle..... 1.60

SERVING BOWLS

Glass

- Clear glass, 3qt..... 5.25
- Leaf pattern
 1 quart 3.70
 2 quart 4.75
 3 quart 5.25
 6 quart 6.30
- Supreme bowl 2.65

- Acrylic**—Pebble or ribbed pattern
 3 gallon 18" diameter..... 7.35
 5 gallon 23" diameter..... 8.40
- White ceramic**
 Round or Oval 12" 6.30
- Silver revere bowl**..... 4" 5.25
 8" or 10" 6.30

CAKE STANDS

- Glass or Stainless steel cake stand, 10"** 7.35
Silver cake stand, 4" height x 14" diameter 26.50
Cupcake stand 6-tier acrylic- 30" Height..... 42.00

TABLETOP ACCESSORIES

- Salt and pepper set** tower glass 2.65
 miniature glass 2.10
- Sauce cup**..... 2.5 oz, stainless55
- Supreme bowl** glass 2.65
- Cream and sugar bowls:** see "Coffee Service" on pg 8
- Gravy boat**..... stainless steel..... 3.15
- Pitcher**
 Acrylic..... 60 oz..... 2.65
 Stainless steel 100oz 4.20
 Glass 60oz 5.25
 Silver..... 64 oz..... 6.30
- Wine carafe** 1 liter, glass 2.65
- Bread baskets**
 Black..... gold trim 2.10
 Wicker..... 2.10
 Silver..... 3.70
- Wicker baskets** assorted shapes..... 4.75
- Table standard**..... 1.5", 6", or 12" high 1.60
 "Fleur de lis" style 12" 2.65
- Table number** for standard55
- Place card holder** 1.5" high55
- Champagne bucket**
 Stainless steel tabletop 3.15
 Silver- ornate..... tabletop 12.60
 Silver..... tabletop 12.60
 Stainless steel w/ floor stand 15.75

MIRRORS

- Round mirrors**
 12" flat or beveled 4.20
 14" beveled 6.30
 16" flat 6.30
- Octagonal mirror**..... 10" beveled 3.15
 17" beveled 8.40
- Square mirror** 10" x 10" beveled 2.10
 12" x 12" beveled 2.65
- Tiered Mirrors**
 12" tiered..... 12.30
 18" tiered..... 15.75

TABLETOP CANDELABRAS

For tapered candles (candles not included)

Silver candlestick w/mosaic hurricane 20" height (holds a 6" taper)	16.80
Silver 3-branch candelabra, 9.5" height...	9.45
Silver 5-branch candelabra, 14" height (2 styles available)	12.60
5-branch candelabra, 33" height	21.00
-Antique gold or silver color	
5-branch ornate silver candelabra, 33.5" height	31.50
5-branch chrome candelabra, 30" height	26.25
Optional center floral bowl available at n/c	

FLOOR CANDELABRAS

For tapered or pillar candles (candles not included)

Gold wooden freestanding candelabra..	15.75
Brass candle lighter / snuffer.....	6.30
Brass aislelabra	
Attaches to pew	12.60
Freestanding.....	15.75
Brass candelabra	
Trinity..... fits 3 lights.....	12.60
Unity..... fits 3 lights.....	12.60
7 light adjustable	15.75
9 light 3 tiers	18.90
15 light spiral or fan.....	21.00
17 light heart	21.00
18 light double ring.....	31.50
Chrome aislelabra	
Attaches to pew	12.60
Freestanding.....	15.75
Chrome candelabra	
Unity..... fits 3 lights.....	16.80
7 light adjustable	21.00
15 light spiral or fan.....	34.65
White perma candle	8" 12" or 15" 1.60

TABLETOP DÉCOR

Votive Tree	42" height, w/ votives .	47.25
Table lamp	14" height.....	6.30
Gold base w/ gold beaded shade		6.30
Silver base w/ silver or green shade		6.30
Gold base w/ frosted shade		7.90
Silver antique base w/ frosted shade		7.90
Bud vase	9" glass (two styles)	2.10
Cylinder bud vase	7.5" glass.....	2.10
Twist bud vase	11.5" glass.....	2.10
Bouquet vase	5.5" plain glass.....	1.60
	7" swirl glass.....	3.15
Eiffel tower vase	27" glass.....	10.50
High polish aluminum vase	25" height.....	21.00

Silver floral stand	30"	21.00
Wrought iron floral stand	30"	15.75
This item can be customized- please call for pricing		
Square vase		
3"x 3"x 3"		2.10
4"x 4"x 4"		3.15
6"x 6"x 6"		5.25
10"x 3' x 3"		4.20
14" x 3" 3"		5.25
Glass cylinder vase		
6", 7.5", 9", or 10.5", (3" diameter)		3.15
14" height, (5" diameter)		8.40
28" height, (5" diameter)		15.75
Tapered candle holders		
Classic design..... glass, 2.25" height80
Star-shaped	glass80
Silver candlestick..	6" height	4.20
For tapered, votive, or pillar candles		
Hurricane globe, 14" height		5.25
Bronze lantern, 20" height.....		19.95
Votive candle holders		
Glass votive holder, assorted styles.....		.55
• Add a tea light candle55
For floating candles or flowers		
Brandy sniffer	32 oz.....	1.30
Rose bowl	6" glass.....	2.10
Bubble bowl	8" glass.....	3.15
Supreme bowl.....	15 oz.....	2.65
Globe, 7" height footed glass, 60 oz.....		3.15
Super bowl, 10" height footed glass, 45 oz		3.15
Ivy bowl, 9.5" diameter x 3.5" height glass		4.75
Glass cylinder	6", 9", or 10.5" high	3.15
LED votive		2.65
choose a white frosted votive holder. Flickers like a real candle with an 8 hour battery life		

WEDDING ACCESSORIES

Custom fabric draping - See Decor page 12

Please contact your event specialist for a custom quote.

Aisle runners —white floral lace design, disposable		
.....	Please call for pricing	
Arbor —white lattice, 7' x 5' x 3'		73.50
Add two lattice plant stands.....		15.95
Galvanized Steel Arbor		157.50
Deluxe white wood arbor 4' x 8' (Installed)		210.00
Available with flower boxes		
8' x 8' (Installed)		262.50
Brass/Chrome archway 92" x 60"		36.75
Add two brass or chrome plant stands.....		15.75
Column, faux granite, 27"		26.25
Column, white	14" ceramic	10.50
	40" resin	21.00
	72" resin	31.50
Column, aluminum	52" height.....	31.50

Continued..

Urn, high polish aluminum 29" height.....	31.50
Guest book stand white lattice	31.50
chrome frame	16.80
Kneeling benches	
Chrome or Brass with white cushions.....	21.00
Lattice screens - white	
Single vinyl panel, 4' x 8'	15.75

*Prices are subject to change without notice

PIPE & DRAPE

Our pipe and drape products come in various heights and colors, from standard 8' tall up to 22', and colors from basic solid colors to sheer and velvet fabrics.

8' height, per foot	2.90
12' height, per foot	6.30
16' height, per foot	12.60
22' height per foot	12.60
3' height, per foot	1.85
8'x8' up to 10'x10' complete booth	42.00
(includes table, 2 chairs, linen, sign)	
8'x8' up to 10'x10' (booth only).....	26.25

CONFERENCE EQUIPMENT

Easel	15.75
Crowd control/partitions	
<i>Aisle stanchions</i>	
Chrome w/retractable belt system	23.10
Chrome	10.50
White metal	8.40
White or black plastic.....	6.30
<i>Rope and chain for stanchions</i>	
6' rope..... burgundy velour	7.35
8' rope..... black velour	7.35
15'	7.35
10' black plastic chain	4.20
10' white plastic chain	4.20
Bike barricade 8' section	15.75

EVENT MAKING

Kiosk- custom sign display please call

The kiosk system is custom for each event and order, please speak with one of our event specialists for details.

Stage barricade 47.25
Outdoor concert security barriers, 4' linking sections

Red carpet runners <i>indoor use only</i>	
3' x 15' or 4' x 15'	31.50
3' x 25' or 4' x 25'	52.50
4' x 50'	52.50

Black carpet runner - 3' x 50'	131.25
White picket fence 5' long section	15.75
10' long section	26.25

Gold shovel for ground breaking....	10.50
Raffle barrel brass table model	26.25
oak floor model	36.75
Ribbon cutting scissors -for "Grand Openings"	36.75
Trash containers - with plastic liner	
10 gallon (office style)	3.15
30 gallon	8.40
55 gallon (commercial drum style)	7.35
White linen trash container skirt.....	15.75
Disposable 30 gal w/liner	10.50
Garment rack	15.75
holds 25 coats.....	
Plastic hanger..... heavy duty30
Wood hanger..... executive style40
Coat checks..... package of 100	5.25
Columns	10.50
14" white ceramic	26.50
27" faux granite	21.00
40" classic white	31.50
72" classic white	31.50
Column high polish aluminum 52" height.....	31.50
Urn high polish aluminum 29" height.....	31.50
Mirror ball , 20" diameter	
with turner and 2 pin lights.....	42.00
Ficus tree	21.00
6.5'	31.50
with lights.....	
Topiaries	
68" wrought iron.....	21.00
83" wrought iron.....	31.50

BARS

5' illuminated bar	204.75
4' collapsible	64.00
faux marble.....	
4' draped , black or white skirts	64.00
6' draped , black, white, or burgundy skirts	64.00
4' serpentine bamboo bar	63.00
Serpentine , black or white skirts	73.50
Custom finish wood bar fronts	please call
Serpentine backlit bar (8' section, 2 pc. min) .	315.00

DÉCOR

Custom fabric draping (color drape available)

- Tent draping, swag draping, ceiling liners
- Venue draping
- Panel draping
- Backdrops
- Cafe and twinkle lighting
- Parasols
- Paper lanterns
- We will work with you to determine the best way to drape your event space. The possibilities are endless!

Please contact an event specialist for a custom quote.

SOUND SYSTEMS & PODIUMS

Speaker systems

- All speaker systems include an adjustable tripod stand
- All speaker systems come with inputs to support hard wired mics and MP3 devices (w/patch cord)

Standard speaker system	105.00
• Includes handheld cordless microphone	
• Addresses crowds up to 500	
Deluxe speaker system.....	157.50
• Your choice of cordless handheld or lapel microphone	
• Addresses crowds up to 1000	
Two channel mic & speaker system	236.25
• Supports two wireless mics, plus other acc.	
MP3 patch cord for sound systems.....	5.25
Hard-wired mic.....	26.25
Extra speaker for Deluxe system.....	47.25
Extra receiver & wireless mic set for Deluxe system	78.75

Projectors

Screens.....	50" x 50" or 60" x 60" ...	26.50
	70" x 70" deluxe	42.00

Podiums

Table models		
Formica		15.75
Gray	with sound	78.75
Floor models		
Cherry wood		73.50
Black metal.....		68.25
Black formica	collapsible	42.00
Oak.....	with sound	105.00

DANCE FLOORS

Indoor floor (installed)

Parquet	3' x 3' section.....	11.80
Black.....	3' x 3' section.....	18.90
White	3' x 3' section.....	18.90
Light Birch.....	4' x 4' section.....	26.25
Cherry.....	4' x 4' section.....	26.25
Black.....	4' x 4' section	36.75
White	4' x 4' section.....	36.75
Edging		included

Outdoor floor (installed)

Must be installed under a tent or canopy

Light Parquet	3' x 4' section.....	18.90
Dark Parquet	3' x 4' section.....	18.90
Cherry.....	4' x 4' section.....	26.25
Edging		included

Sample sizes:

9' x 12'.....	7 couples
12' x 12'.....	9 couples
12' x 15'.....	12 couples
15' x 15'.....	15 couples
15' x 16'	16 couples
18' x 16'.....	20 couples
18' x 24'.....	29 couples

Other size options are available. Call your rental specialist for details.

STAGING & FLOORING

Stage (installed)

- Available in almost any size

- Stage heights available:

8", 12", 16", 24", 32", 40" or 48"	
4' x 4' stage section (up to 48" height)	25.20
4' x 6' section	37.80
4' x 8' stage section.....	50.40

- Sample sizes:

8' x 12'.....	151.20
12' x 16'.....	302.40
16' x 24'	604.80

Add piece of mind to an event by selecting a floor for your event space. Transform an area of unusable ground to a leveled, carpeted solid ground for any of our tents, canopies or structures. Flooring can complete an event space by providing more options for climate control. Please contact an event specialist for details on how flooring can solve any issues with the elements.

Leveled flooring starting at 2.65 per sq.ft

Laydown flooring starting at 1.60 per sq. ft

Will follow the contour of the ground

Carpet for staging or flooring per sq. ft. 1.05

Astroturf for staging or flooring per sq. ft.70

Stepsstarting at 26.50

Stage skirting, black, 16' lengths..... 23.10

Handicap ramp (1" grade = 1' of ramp)please call

Guard rails, per foot..... 3.15

Choir riser 3 tier, 78.75

- Accommodates 12 to 16 people per choir riser

Triangle light trussing starting at 5.25 per lin.ft

MOBILE STAGING UNITS

Mobile staging units are an easy solution for a complete outdoor stage for your next event. Delivered and installed for a nominal delivery fee, please call for more details.

Full Showmobile - appx. 32' wide, 16' deep ... 1575.00

Small Showmobile - appx. 16' wide, 16' deep 787.50

BLEACHERS

Mobile bleacher units are a convenient way to seat any number of spectators at your event. These bleachers are available for rental and delivery is at a nominal charge. We offer these units in 5 or 10 row seating arrangements. Again, please note these rates do not include delivery.

- 5-row aluminum bleacher (seats 50)..... 393.75
- 10-row mobile bleacher unit (seats 250) 1050.00

TENTS AND CANOPIES

Customer Install (Lightweight) shade canopies

- Designed for customer to install on a grass surface; poles break down for easy transport
- Sidewall is **not** available

15' x 15'	97.75
20' x 20'	141.75
20' x 30'	168.00

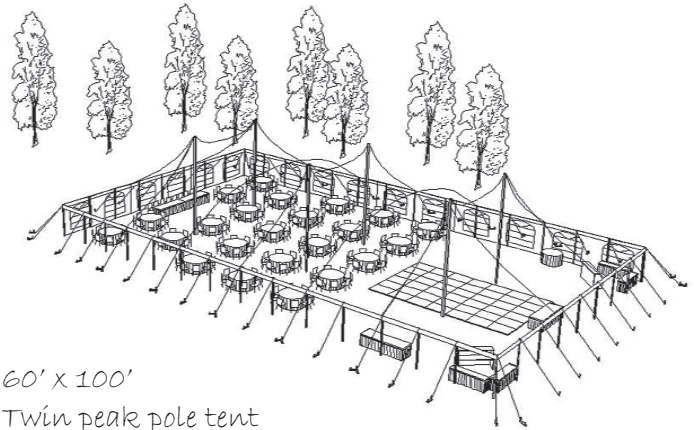
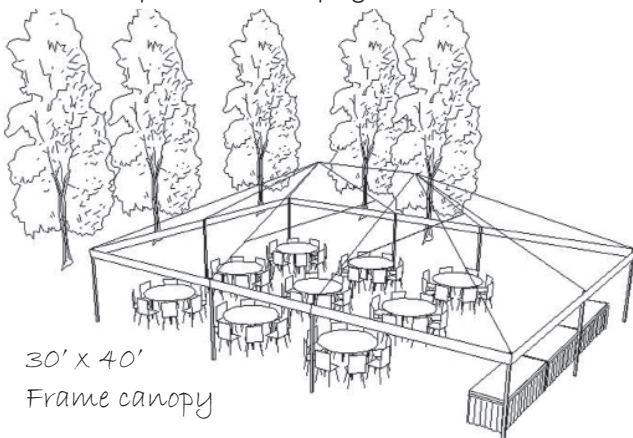
Elite pole tents

- The Elite's contemporary shape and single horizontal stripe give a unique look to your event
- ideal for set up in grass locations
- available in a variety of colors, or all white
- sidewall priced separately, see options on page 15

	<u>Customer install</u>	<u>Ultimate install</u>
20' x 20'	152.25	278.25
20' x 30'	225.75	362.25
20' x 40'	N/A	435.75
30' x 30'	N/A	498.75
30' x 40'	N/A	577.50
30' x 50'	N/A	708.75
30' x 60'	N/A	850.50

Frame canopies

- These self-supporting frame structures do not have center poles, maximizing usable space inside the canopy
- Options are available for securing frame tents
- Available in a variety of colors, or all white
- Sidewall options listed on page 15



Twin peak pole tent
Ready for the wedding reception with bars, dance floor, a head table, and guest seating!

Ultimate Install

10' x 10'	168.00
10' x 10' High-peak	178.50
10' x 10' Marquee	178.50
15' x 15'	246.75
20' x 20'	299.25
20' x 20' High-peak	341.25

CUSTOM TENTING & SITE EVALUATIONS

We have a variety of tents and structures to accommodate any event need. From small backyard parties to large corporate galas, our tent and event specialists can help customize a quote for your special occasion. Call or make an appointment to visit our showroom, and we can discuss everything from your guest count, available space, type of surface installation, timetable, theme and more!

Expandable frame canopies

- The same style canopy as described in the 'Frame canopies' section to the left, except larger
- Sidewall is priced separately
- Expands to various lengths and offered in widths of 10', 15', 20', 30', or 40'

Traditional pole tents

- Traditional style tent with center poles
- Available in a variety of colors
- Sidewall priced separately
- Expands to various lengths
- Offered in widths of 30', 40', and 50'

Continued...

Single peak pole tents

- Feature a single row of center poles which create dramatic, soaring peaks
- A popular tent for weddings
- Available in white
- Sidewall priced separately
- Expands to various lengths with a 30' or 40' width

Twin peak pole tents

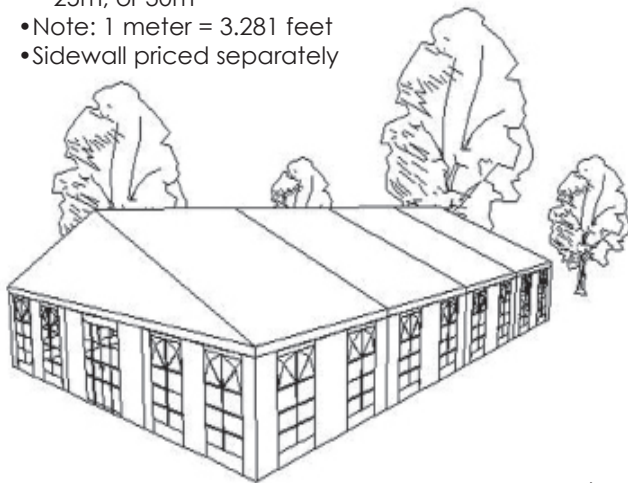
- Features a unique "twin center pole" design with dramatic, soaring peaks.
- A popular tent for weddings
- Available in white
- Sidewall priced separately
- Expands to various lengths and offered in widths of 60', 80' or 100'

High-peak frame canopies

- Similar to frame canopies, but with a tall, showy peak
- Starts as a 10'x10', expandable in 10' sections
- Available in white
- Sidewall priced separately

Clearspan tent structures

- These structures have the feel of a building complete with optional doors, walls, and hexagonal ends
- Available in white.
- Expands to various lengths and offered in widths of 20', 30', 40', 60', 3m, 6m, 9m, 10m, 12m, 15m, 20m, 25m, or 30m
- Note: 1 meter = 3.281 feet
- Sidewall priced separately



40' x 80'
Clearspan structure
with French windows

CLIMATE CONTROL

Air-conditioning

Tents are great for protecting guests from rain or the hot summer sun. If you want to go one step further, we can provide air-conditioned tents.

Heating

Why worry about the temperature? When temperature is a concern, Ultimate Events has many solutions. Please speak with your event specialist to determine the area that heat is needed in. We will calculate how many and what size of heat units needed as well as an estimate on the amount of propane to fuel the heaters. Propane rates are subject to change based on market price.

Please call for a quote on heat or air conditioning for your next tent rental!

TENT ACCESSORY OPTIONS

Tent sidewall - available in a variety of styles

- White
- Clear
- Screen
- Hard glass wall
- Window or cathedral window

- Tent lighting
- Fans
- Doors
- Portable restrooms
- White fabric tent liners
- Decorative draping
- Leveled floors
- Carpeting
- Stages
- Power supply
- Banner frame
- Cafe lighting

POWER SUPPLY & GENERATORS

Often times an after-thought, having enough power to supply your event is a crucial element. Things to consider when planning an outdoor event include; Type of power to use (mobile or stationary); distance from the power supply to the extension cords, number of circuits available, and more. Ultimate Events can help you answer these questions, whether it is for a mobile generator or just power from simple home outlets.

Extension cord - 50'	5.25
Cable ramp - cord protector 4'	36.75
5,000 watt generator- unleaded fuel.....	157.50

Complete event power available. Call for Pricing

LIGHTING & EFFECTS

To compliment your event space, we have an assortment of lighting options to choose from. Whether you want to suspend lights in the air, or along the perimeter of your tent or venue, attach lights to a tent pole, or use floor stands to up-light your space, we can help you find the right lighting for your special event. From classic Italian lights, to dazzling chandeliers, our event specialists can help answer any of your lighting questions!

Italian Lights (perimeter lights) per ft.	1.05
Globe Lights (string of 8)	84.00
Colored Lamp String	63.00
Street lamp 5 light black or white	47.25
Black iron candle holder —14" or 40" stand	5.25
Windflame candle stands (candle not included)	2.50
Quartz Light rigged w/clamp only ..	31.50
Par 38 can light ...avail. w/clamp or w/stand...	31.50
LED Opti-par ...with remote to change colors..	63.00
Opti-par fixture ...avail. w/clamp or w/stand...	57.75
Elipsoidal light rigged w/clamp only ..	78.75
•Color gels and brackets are available for our par lights and the elipsoidals. Ask for details.	
Sparkle DJ light	21.00
Light stand package	
includes tri-pod and 4 par lights	78.75
Metal Halide light rigged from tent only ..	157.50
Chandelier small w/lamp shades	262.50
Chandelier with crystals	630.00
Iridescent beaded chandelier	131.25
24" diameter, 5' drop- custom installation required	

NEON *(one set of 20-hour batteries included)*

Neon centerpieces	30.45
•Neon circle, star, heart, spade, club, diamond, musical notes, <i>and others</i> available in assorted colors	
Neon illuminated tray , 15" assorted colors	27.30
•For use as a waiter's tray or for decoration	
Neon illuminated tabletop , 30"	57.75

GAMES

Bingo set	
-includes cage, 1000 chips, & 100 cards ..	52.50
Bocce Ball set	18.90
Croquet set	18.90
Horseshoe set	16.80
Tug of war rope	15.75
Volleyball set	22.10
Number wheel	25.25
Dunk tank- trailer towed 2"ball	152.25

NOTES:

*Prices are subject to change without notice